





Cornerstone Christian School of Jacksonville  
 Monthly School Calendar  
 January 2022

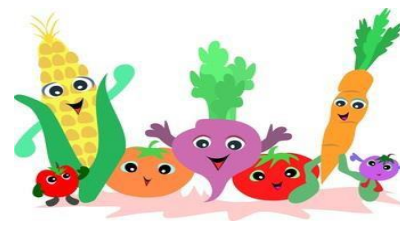
# JANUARY





Sunday	Monday	Tuesday	Wednesday	Thursday	Friday	Saturday
<p><b>Weekly Bible Memory Verse</b>            Ephesians 6:10 - "Finally, be strong in the Lord and in his mighty power."</p>	<p><b>3</b>            No School            Teacher Planning Day</p>	<p><b>4</b>            Students Return to School            First Day of 3<sup>rd</sup> Quarter</p>	<p><b>5</b>            2<sup>nd</sup> Quarter Report Cards            Emailed to Parents</p>	<p><b>6</b>            Dress Down Fundraiser            \$1.00</p>	<p><b>7</b>            Krispy Kreme Donut Sale            Fundraiser</p>	<p><b>8</b>  </p>
<p><b>9</b>  <b>Weekly Bible Memory Verse</b>            Ephesians 6:11 - "Put on the full armor of God, so that you can take your stand against the devil's schemes."</p>	<p><b>10</b>            MAPS Testing Begins            Kindergarten thru 5<sup>th</sup> Grade            Red CCS Polo &amp; Black Pants for            PreK thru 11<sup>th</sup> Grade and 12<sup>th</sup>            Grade, Senior Dress Day.</p>	<p><b>11</b>            MAPS Testing            Kindergarten thru 5<sup>th</sup> Grade</p>	<p><b>12</b>            MAPS Testing            Kindergarten thru 5<sup>th</sup> Grade</p>	<p><b>13</b>            MAPS Testing            Kindergarten thru 5<sup>th</sup> Grade            Dress Down Fundraiser            \$1.00</p>	<p><b>14</b>            No School            Weather Day</p>	<p><b>15</b>  </p>
<p><b>16</b>  <b>Weekly Bible Memory Verse</b>            Ephesians 6:12 - "For our struggle is not against flesh and blood, but against the rulers, against the authorities, against the powers of this dark world and against the spiritual forces of evil in the heavenly realms."</p>	<p><b>17</b>            No School            Martin Luther King Jr. Day</p>	<p><b>18</b>            MAPS Testing            6<sup>th</sup> Grade thru 8<sup>th</sup> Grade</p>	<p><b>19</b>            MAPS Testing            6<sup>th</sup> Grade thru 8<sup>th</sup> Grade</p>	<p><b>20</b>            MAPS Testing            6<sup>th</sup> Grade thru 8<sup>th</sup> Grade            Field Trip: Senior Lunch            @ 11:30am            Dress Down Fundraiser            \$1.00</p>	<p><b>21</b>            MAPS Testing            6<sup>th</sup> Grade thru 8<sup>th</sup> Grade            100<sup>th</sup> Day of School            Celebration</p>	<p><b>22</b>  </p>
<p><b>23</b>  <b>Weekly Bible Memory Verse</b>            Ephesians 6:13 - "Therefore put on the full armor of God, so that when the day of evil comes, you may be able to stand your ground, and after you have done everything, to stand."</p>	<p><b>24</b>            MAPS Testing            9<sup>th</sup> Grade thru 12<sup>th</sup> Grade            Red CCS Polo &amp; Black Pants for            PreK thru 11<sup>th</sup> Grade and 12<sup>th</sup>            Grade, Senior Dress Day.</p>	<p><b>25</b>            MAPS Testing            9<sup>th</sup> Grade thru 12<sup>th</sup> Grade</p>	<p><b>26</b>            MAPS Testing            9<sup>th</sup> Grade thru 12<sup>th</sup> Grade            Early Release for Students            @ 12:00PM</p>	<p><b>27</b>            MAPS Testing            9<sup>th</sup> Grade thru 12<sup>th</sup> Grade            Dress Down Fundraiser            \$1.00</p>	<p><b>28</b>            MAPS Testing            9<sup>th</sup> Grade thru 12<sup>th</sup> Grade</p>	<p><b>29</b>  </p>
<p><b>30</b>  <b>Weekly Bible Memory Verse</b>            Ephesians 6:14 - "Stand firm then, with the belt of truth buckled around your waist, with the breastplate of righteousness in place,"</p>	<p><b>31</b>            Red CCS Polo &amp; Black Pants for            PreK thru 11<sup>th</sup> Grade and 12<sup>th</sup>            Grade, Senior Dress Day.</p>	<p>* Teachers Return to School from Winter Break: Monday, January 3, 2022. Student's Return to School from Winter Break: Tuesday, January 4, 2022.</p> <p>*All students may dress down each Thursday during the month of January for \$1.00. Money collected from these Dress Down Days will go towards fundraising for the Senior Trip.</p>				

# Cornerstone Christian School

## Meal Service Menu - January 2022



Lunch Menu				
Monday	Tuesday	Wednesday	Thursday	Friday
<b>3</b>  <b>No School</b>	<b>4</b> <u>Week #2 / Day #2</u> Popcorn Chicken (WG) Pineapple Broccoli Golden Tater Tots Green Beans	<b>5</b> <u>Week #2 / Day #3</u> Corn Dog (WG) Applesauce Cup Collard Greens / Baked Beans Frozen Sidekick Cup Ketchup / Mustard	<b>6</b> <u>Week #2 / Day #4</u> Hamburger on (WG) Bun Peach Slices Lettuce / Tomato Yellow Corn / Mixed Vegetables Ketchup / Mustard	<b>7</b> <u>Week #2 / Day #5</u> Chik N' Fry Sticks (WG) Red Apple Carrot Sticks Baked Beans Golden Tater Tots
<b>10</b> <u>Week #1 / Day #1</u> Hog Dog on WG Bun Mixed Fruit Cocktail Baked Beans Golden Tater Tots Ketchup / Mustard	<b>11</b> <u>Week #1 / Day #2</u> Spaghetti & Meat Sauce Garlic Bread (WG) Pineapple Broccoli Carrot Sticks Ranch Dressing	<b>12</b> <u>Week #1 / Day #3</u> Chicken Nuggets (WG) Applesauce Cup Collard Greens Frozen Sidekick Cup Yellow Corn BBQ Sauce	<b>13</b> <u>Week #1 / Day #4</u> Beef Tacos (x 2) Dinner Roll (WG) Peach Slices Lettuce / Tomato Golden Tater Tots Green Beans / Taco Sauce	<b>14</b>  <b>No School</b>
<b>17</b>  <b>No School</b>	<b>18</b> <u>Week #2 / Day #2</u> Popcorn Chicken (WG) Pineapple Broccoli Golden Tater Tots Green Beans	<b>19</b> <u>Week #2 / Day #3</u> Corn Dog (WG) Applesauce Cup Collard Greens / Baked Beans Frozen Sidekick Cup Ketchup / Mustard	<b>20</b> <u>Week #2 / Day #4</u> Hamburger on (WG) Bun Peach Slices Lettuce / Tomato Yellow Corn / Mixed Vegetables Ketchup / Mustard	<b>21</b> <u>Week #2 / Day #5</u> Chik N' Fry Sticks (WG) Red Apple Carrot Sticks Baked Beans Golden Tater Tots
<b>24</b> <u>Week #1 / Day #1</u> Hog Dog on WG Bun Mixed Fruit Cocktail Baked Beans Golden Tater Tots Ketchup / Mustard	<b>25</b> <u>Week #1 / Day #2</u> Spaghetti & Meat Sauce Garlic Bread (WG) Pineapple Broccoli Carrot Sticks Ranch Dressing	<b>26</b> <u>Week #1 / Day #3</u> Chicken Nuggets (WG) Applesauce Cup Collard Greens Frozen Sidekick Cup Yellow Corn BBQ Sauce	<b>27</b> <u>Week #1 / Day #4</u> Beef Tacos (x 2) Dinner Roll (WG) Peach Slices Lettuce / Tomato Golden Tater Tots Green Beans / Taco Sauce	<b>28</b> <u>Week #1 / Day #5</u> Chicken Sandwich Red Grapes Baked Beans Mixed Vegetables
<b>31</b> <u>Week #2 / Day #1</u> Pepperoni Pizza (WG) Mixed Fruit Cocktail Carrot Sticks Mixed Vegetables / Ranch	 <b>ALL LUNCH MEALS ARE SERVED WITH A CHOICE OF:</b> 1% White Milk <i>or</i> Fat-Free Chocolate Milk 			

Breakfast Menu
<b><u>Monday</u></b>
Fresh Apple 100% Apple Juice Strawberry Nutri-Grain Graham Cracker 1% Low Fat White Milk <i>OR</i> Fat Free Chocolate Milk
<b><u>Tuesday</u></b>
Applesauce Cups (x 2) Apple Cinnamon Muffin (WG) 1% Low Fat White Milk <i>OR</i> Fat Free Chocolate Milk
<b><u>Wednesday</u></b>
Fresh Banana 100% Grape Juice Blueberry Muffin (WG) 1% Low Fat White Milk <i>OR</i> Fat Free Chocolate Milk
<b><u>Thursday</u></b>
Applesauce Cup Fresh Apple Cheerios Cereal (WG) 1% Low Fat White Milk <i>OR</i> Fat Free Chocolate Milk
<b><u>Friday</u></b>
Fresh Banana Applesauce Cup Banana Muffin (WG) 1% Low Fat White Milk <i>OR</i> Fat Free Chocolate Milk